

Greyson T
1394 SQ FT
421 - 41 Street SW



- Fireplace in the great room
- Railing with metal spindles on the main floor
- 6 piece appliances
- LED lighting throughout the kitchen
- Quartz countertops in the kitchen and second floor bathrooms
- Luxury water resistant vinyl plank floors on the main floor
- Energy star rating triple pane windows, with Low E Argon filled glass
- Heat Recovery Ventilator (HRV), high efficiency furnace and hot water tank
- Laundry room on the second floor
- Large master bedroom includes an ensuite and a large walk in closet

The Hills at Charlesworth Showhome
714 Charlesworth Way SW, Edmonton
587.521.5869
btate@bedrockhomes.ca

Job # CHH-0-034287 Lot 36, Block 8, Plan 172 3655

Notes:

bedrockhomes.ca

VISIT US AT ANY OF OUR SHOWHOMES!
Monday - Thursday 3-8pm, Weekends & Holidays 12-5PM

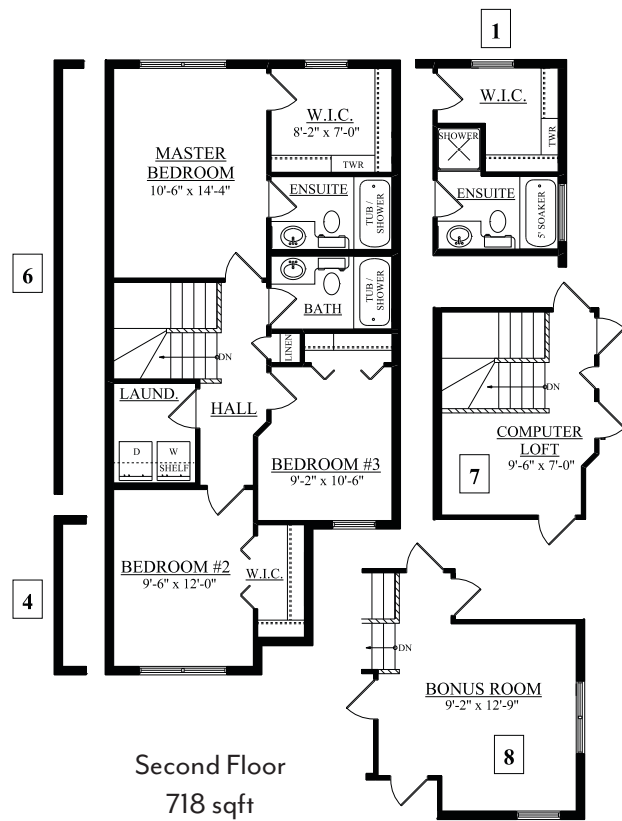
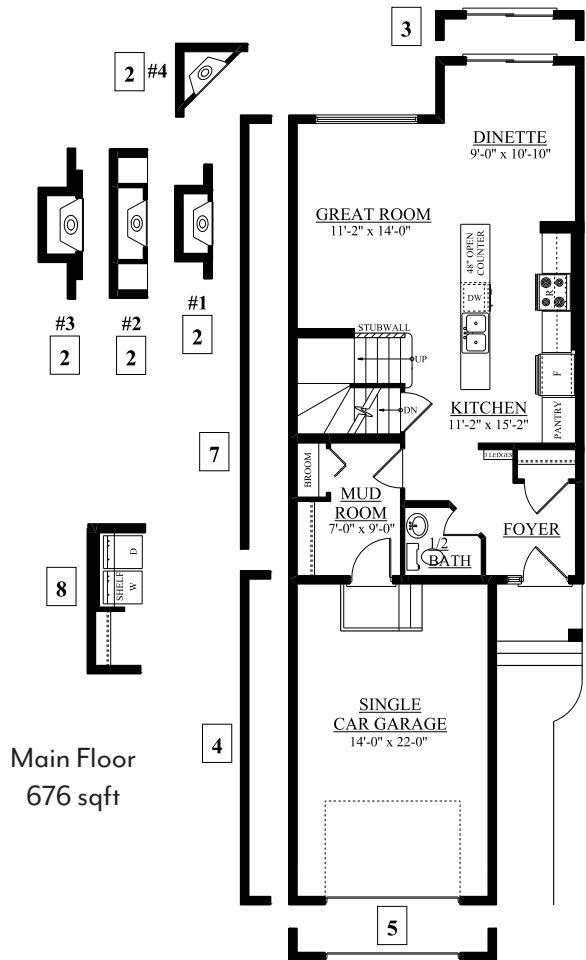


Greyson T
 1394 SQ FT
 421 - 41 Street SW



The Hills at Charlesworth Showhome
 714 Charlesworth Way SW, Edmonton
 587.521.5869
 btate@bedrockhomes.ca

Job # CHH-0-034287 Lot 36, Block 8, Plan 172 3655



bedrockhomes.ca

VISIT US AT ANY OF OUR SHOWHOMES!
 Monday - Thursday 3-8pm, Weekends & Holidays 12-5PM

